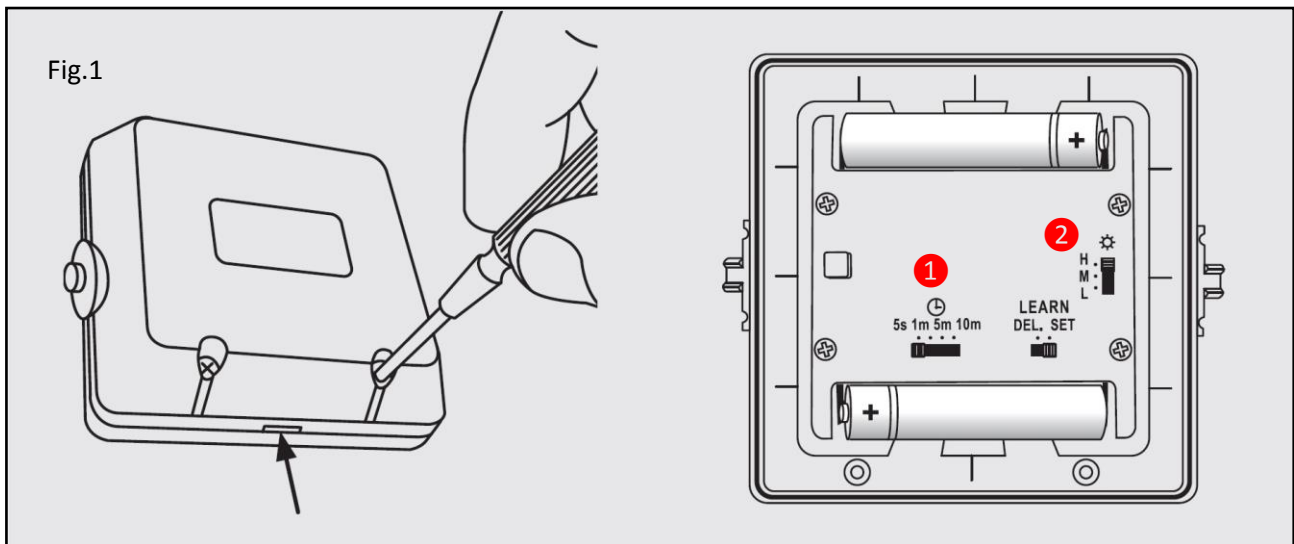


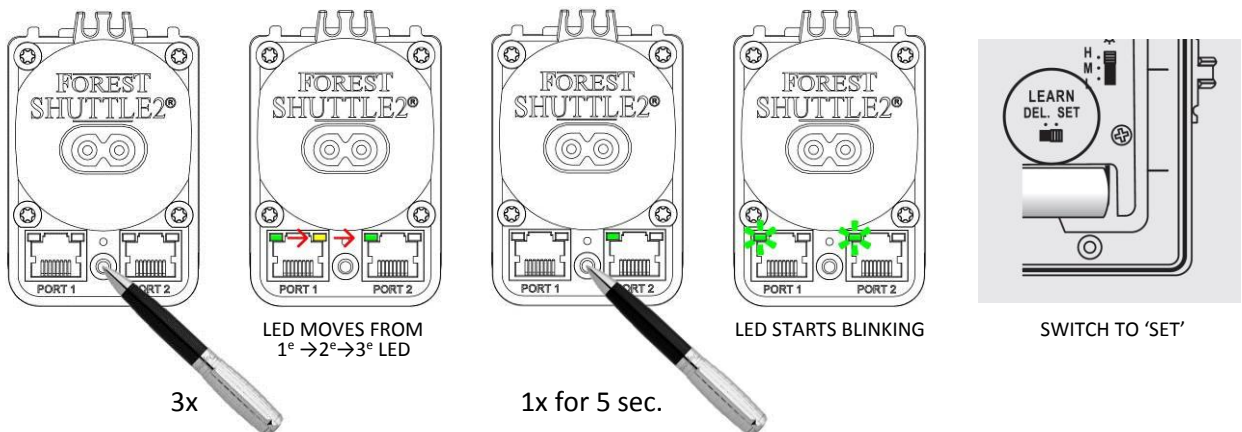
The movement sensor reacts on movement within its detection area. The range is +/- 6 meters with an angle of 110°.

Possible interference sources can be: heating/cooling devices, air movement devices, direct daylight to sensor. The movement-sensor does not detect through a glass window, but it will send through a glass window.

Place the batteries in the sensor (fig. 1). After placing the batteries, the closing time can be adjusted (1). The light sensitivity (2) must be set to 'H'.



**Programming the sensor to a Shuttle S / L / M receiver motor (from 2017):**



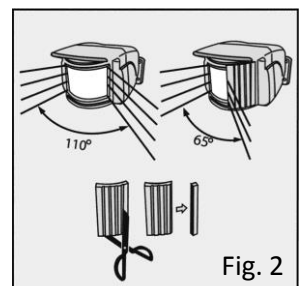
By means of the caps, the detection area can be narrowed (fig.2)

Operation: when movement is detected, the curtain will close.

After 5 seconds of no movement (or 1 minute when set at 1), the curtain will open. If the curtain is still closing, then it will stop after these 5 seconds.

If continuous movement is detected the curtain will not open and close anymore, for protection of the motor.

After 5 seconds of no movement, the sensor will control the curtain again.



When the sensor stops working, please check the batteries and check if the light sensitivity is set to 'H'.